

# Heart of Japan



~ All about Aichi ~

This booklet was created by students of Aichi Prefectural University as part of our Project for Promotion of Global Human Resource Development. It is our hope that this brief introduction to Aichi provides useful information for visitors to the area.

All information provided herein is true to the best of our knowledge at the time of publication, and transport directions all take Nagoya Station as a starting point. All recommendations are simply the opinions of the authors.

Enjoy Aichi!

# Contents

**Event Calendar**

**1**

**Technology**

**2**

**Scenery**

**4**

**Activities**

**6**

**Culture**

**8**

**History**

**11**

**Tours**

**14**



# Event Calendar

	Popular events & festivals	Season	Temperature(°C)	
Spring	Nagoya Women's Marathon <a href="http://womens-marathon.nagoya/en/">womens-marathon.nagoya/en/</a>	Cherry blossom season	Mar. 4.2 8.7 13.9	
	Best time to see cherry blossoms @ Tsurumai Park (p.4) or Okazaki Park (p.7)		Apr. 9.6 14.4 19.9	
	Strawberry Picking @ Sawada Farm <a href="http://www.sawadafarm.com/english.html">http://www.sawadafarm.com/english.html</a>		May 14.5 18.9 24.1	
Summer	World Cosplay Summit (p.10)	Rainy season	Jun. 19.0 22.7 27.2	
	Nagoya Grand Sumo Tournament <a href="http://www.sumo.or.jp/en/index">www.sumo.or.jp/en/index</a>		Jul. 23.0 26.4 30.8	
	Nippon Domannaka Festival (p.10)		Aug. 24.3 27.8 32.8	
Autumn	Fireworks event in Oiden Festival <a href="http://www.oidenmaturi.com/hanabi/index.html">www.oidenmaturi.com/hanabi/index.html</a>	Firework season		
	Tezutsu Fireworks Festival @ Toyohashi (p.12)		Typhoon season	Sep. 20.7 24.1 28.6
	Nagoya Festival (p.12)			Oct. 14.1 18.1 22.8
Winter	Autumn Leaves Festival @ Korankei (p.4)	Autumn foliage season	Nov. 8.1 12.2 17.0	
	Chausuyama Ski Resort open (p.5)	Illumination @ Nagoya Station	Dec. 3.1 7.0 11.6	
	Hatsumode @ Atsuta Shrine (p.13)	New year season	Jan. 0.8 4.5 9.0	
	The Naked Festival @ Inazawa (p.12)	Lowest Average Highest	Feb. 1.1 5.2 10.1	

# Technology

## Nagoya City Science Museum

Ph. 052-201-4486

[www.ncsm.city.nagoya.jp/en/index.html](http://www.ncsm.city.nagoya.jp/en/index.html)  
(English)

Boasting the largest planetarium in the world ("Brother Earth") with a diameter of 35 meters, this museum is well worth a visit. Enjoy the planetarium's beautiful starry sky, and take in interesting experiment demonstrations related to air, electricity and chemical reactions. Adults and kids alike will enjoy watching these shows.



Photo courtesy of Nagoya City Science Museum

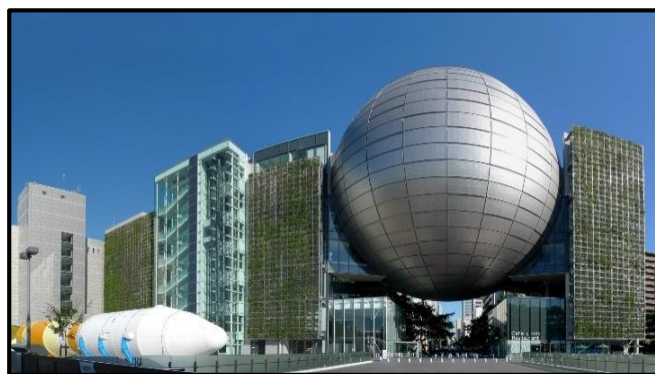


Photo courtesy of Nagoya City Science Museum

**Open:** 9:30-17:00

**Closed:** Mondays, third Friday of the month, December 29 - January 3

**Cost:** Museum only ¥400/adults, ¥200/high school & university students. Museum & planetarium ¥800/adults, ¥500/high school & university students, free/junior high school students & below.

**Transport:** Higashiyama line to Fushimi Station. Walk 5 minutes from Exit 5 toward the spherical object (see picture above).

## The Toyota Commemorative Museum of Industry and Technology

Ph. 052-551-6115 [www.tcm.it.org/english/](http://www.tcm.it.org/english/)  
(English)

Learn about the history of Japanese manufacturing technology at this fascinating museum. Check out textile machinery and automobile exhibits, and enjoy such spectacles as a violin performance by a robot and an 1898 steam engine. Guided tours in Japanese or English are available at no extra cost.

**Open:** 9:30-17:00

**Closed:** Mondays, December 29 - January 3

**Cost:** ¥500/adults, ¥300/junior and senior high school students, ¥200/elementary students, free/seniors

**Transport:** Meitetsu line to Sako Station (2 min.)



Photos courtesy of Toyota Commemorative Museum





## Aichi Prefectural Ceramic Museum

**Ph. 0561-84-7474**

**[www.pref.aichi.jp/touji/english/index.html](http://www.pref.aichi.jp/touji/english/index.html)**

(English)

This museum is located in Seto, famous for ceramic production. The museum displays one of Japan's most comprehensive collections of Japanese ceramics from the primitive to the present age as well as foreign and modern ceramics. Visitors can experience making and painting ceramics, making this museum an enjoyable experience for people of all ages.

**Open:** 9:30-16:30 (\*July 1 - Sept. 30 9:30-17:00)

**Closed:** Mondays (except public holidays), weekdays that follow public holidays, December 28 - January 4

**Cost:** Entry free/under 15 years, ¥300/ high school & university students, ¥400/adults; for making or painting ceramics see HP

**Transport:** Higashiyama line to Fujigaoka then Linimo to Tojishiryokan Minami. It's a 15-minute walk from the station.



Photo courtesy of Aichi Prefectural Ceramic Museum

## SCMAGLEV and Railway Park

**Ph. 052-389-6100**

**[museum.jr-central.co.jp/en/](http://museum.jr-central.co.jp/en/)** (English)

SCMAGLEV and Railway Park introduces Japanese railway technology with displays about the Tokaido Shinkansen, conventional trains and the Superconducting Maglev. Visitors can learn about how railways affect society, economy, culture and daily life. Learn about Japanese railway technology through models and experience a driving simulator. Visitors can also borrow an audio guide (available in Japanese, English, Chinese, Korean, French, German, Spanish, Portuguese) for the tour. Fun for children and adults alike.

**Open:** 10:00-17:30 (last admission 17:00)

**Closed:** Tuesdays (except public holidays), Wednesdays (when Tuesday is a public holiday), December 28 - January 1

**Cost:** ¥200 to ¥1000 (depending on age)

**Transport:** Aonami line to Kinjo-futo (30 min). From there it's about a two-minute walk.



Photos courtesy of SCMAGLEV and Railway Park



# Scenery



## Himakajima

Ph. 0569-68-2388

[www.himaka.net](http://www.himaka.net) (Japanese only)

Himakajima is the nearest island to Nagoya. Enjoy walking or cycling around this island and take in the beautiful scenery. Himakajima is famous for octopus cuisine, and it is a great place to sample fresh seafood. In summer you can also enjoy sea bathing and fishing.

**Transport:** Meitetsu line to Kowa (45 min.) then ferry to Himakajima (20 min.)

## Tsurumai Park

<http://www.nga.or.jp/en/facility/information.html#a> (English)

Centrally located in Nagoya, this park is recognized as one of the top 100 locations for cherry blossom viewing in Japan. In the cherry blossom season you can enjoy viewing lit-up cherry blossoms at night. Tsurumai Park also boasts many thousands of glorious roses, tulips, irises and hydrangeas.

**Open:** 24hrs.

**Cost:** Free

**Transport:** JR Chuo line to Tsurumai (6 min.)

## Korankei

Ph 0565-62-1272 [asuke.info/korankei/](http://asuke.info/korankei/)  
(Japanese only)

A valley area not far from Nagoya, Korankei provides beautiful scenery all year round. Take a walk along the Tomoe River to enjoy the maple trees, which are especially spectacular in fall. Korankei is a popular place to enjoy the red leaves of fall, and is well worth the time it takes to get there. If you visit at night you can enjoy the sight of illuminated maple leaves.

**Open:** 24hrs (illumination until 21:00 Nov.-Dec.)

**Cost:** Free

**Transport:** Meitetsu line to Higashi Okazaki (30 min.) then Meitetsu bus to Korankei (70 min.)

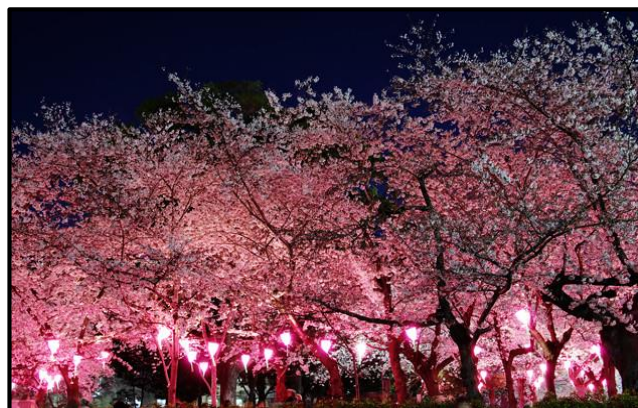
## Sakushima

Ph. 0563-72-9607

[sakushima.com/](http://sakushima.com/) (Japanese only)

Sakushima is an island known for its collection of artistic pieces, which are scattered about the island. One of these objects was used in the Japanese Konan movie "Case Closed" (*Meitantei Konan*).

**Transport:** Meitetsu line to Nishio then ferry to Sakushima.





## Chausuyama

**Ph. 0536-87-2345** [www.chausuyama.jp/](http://www.chausuyama.jp/) (Japanese only)

With an elevation of 1415m, Chausuyama is the highest mountain in Aichi. In spring, 400 000 moss phlox plants offer spectacular scenery, with the appearance of cherry blossoms blooming on the ground. In winter you can enjoy skiing.

**Cost:** Free (flower viewing)

**Transport:** by car (2 hours 15 min. from Nagoya)



Photo courtesy of Chausuyama

## Midland Square



**Cost:** ¥750/adult, ¥500/senior citizen, ¥500/junior and senior high school student (Sky Promenade)

**Ph. 052-527-8877**

<http://midland-square.com/english/index.html> (English)

Midland Square, a centrally located shopping emporium, is lit up in winter and offers a Christmassy atmosphere. Inside the building, a visit to the Sky Promenade on the 42<sup>nd</sup> floor offers good views over the townscape of Nagoya.

**Open:** Sky Promenade 11:00-23:00 (July - September) 13:00-21:00 (January - February)

**Closed:** January 1<sup>st</sup>

**Transport:** Walk (5 min.) across the street from Nagoya Station

## Oasis 21

**Ph. 052-962-1011** [www.sakaepark.co.jp/](http://www.sakaepark.co.jp/) (Japanese only)

This shopping center is beautifully lit up at night in winter. There is a skating rink which is made not of ice but of special plastic. This is lit up, and you can skate on this beautiful rink.

**Transport:** Higashiyama line to Sakae (5 min.)

# Activities

## Ebisenbei no Sato

**Ph: 0569-82-0248** [www.ebisato.co.jp/](http://www.ebisato.co.jp/) (Japanese only)

Ebisenbei no Sato is a shrimp cracker factory. Enjoy observing the shrimp-cracker-making process, taste some free samples and buy some souvenirs for friends and family back home. You can even bake a personalized shrimp cracker.

**Open:** 8:00-17:00 (all year round)

**Cost:** entry ¥300/10min. shrimp cracker baking

**Transport:** Meitetsu Kowa line to Kowa Station (50 min).

Ebisenbei no Sato is 2.5km from Kowa station. Walk or take a taxi.



Photo courtesy of Ebisenbei no Sato

## Arimatsu-Narumi Shiborikaikan

**Ph: 052-621-0111** <http://www.shibori-kaikan.com/en/> (English)

*Arimatsushibori* is a traditional craft using tie-dying. You can make an original handkerchief or T-shirt from as little as ¥1,080. Reservations are necessary. All cloth and tools are provided. You tie your items and they are dyed later and the finished product sent to you. Postage to foreign countries is available.

**Open:** 9:30-17:00 (tie-dying ends at 16:30)

**Closed:** Wednesday (December - March) & New Years holidays

**Cost:** ¥300/adult, ¥100/child

**Transport:** Meitetsu Nagoya line to Arimatsu (30 min) then walk (5 min)



## Laguna Ten Bosch

**Ph. 0533-58-2700** [www.lagunatenbosch.co.jp/laguna/english/index.html](http://www.lagunatenbosch.co.jp/laguna/english/index.html) (English)

An extremely popular marine resort facility where you can enjoy a lot of recreational activities (roller coaster, 360° SD mapping, musicals etc.), gourmet food, shopping, hot springs and so on.

**Open:** See HP (depends on month)

**Cost:** ¥2150/adults (junior high school students and above), ¥1200/elementary school students, ¥700/children (aged three and over)

**Transport:** JR Tokaido line to Gamagori (40 min.) then free shuttle bus (15 min.)



Photo courtesy of Laguna Ten Bosch

## Little World

Ph: 0568-62-5611 <http://www.littleworld.jp/english/index.html> (English)

Take a trip around the world in one day! Here you can try on national costumes, enjoy meals from all over the world and buy various imported souvenirs. It's a good place for people who want to enjoy an exotic atmosphere.

**Open:** March to November 9:30-17:00; December 10:00-16:00; January & February weekdays 10:00-16:00  
weekends & holidays 10:00-16:30

**Closed:** Second week in July, Wednesdays & Thursdays (December - February), December 31.

**Cost:** ¥1,700/adults & university students, ¥1,100/high school and foreign students\*, ¥700/junior high and primary school students

\*show student card and resident card

**Transport:** Meitetsu line to Inuyama (30 min.) then Gifu bus (20 min)



Photos courtesy of Okazaki Park



## Okazaki Park

Ph: 0564-26-1939 (Jyounann-tei)

Enjoy *matcha* (see p.13) in Jyounann-tei, a café in Okazaki Park. In this park you can also enjoy the sight of Okazaki castle.

**Open:** 10:00-16:00 (closed every second and fourth Monday and December 28 - January 3)

**Cost:** ¥450 (green tea with a sweet)

**Transport:** Meitetsu line to Higashi-Okazaki (30 min). Walk 15 min. to Okazaki Park.

## Sanage Onsen

Ph.0565-45-6111 [www.sanageonsen.jp/spa/](http://www.sanageonsen.jp/spa/) (Japanese only)

Relax and enjoy a soak in a hot spring. This hot spring is natural and good for your health.

**Open:** 9:30-23:30 (holidays 8:00-23:30)

**Cost:** ¥1500/adult, ¥1000/child

**Transport:** Higashiyama line to Fujigaoka Station (25 min), then free bus to Sanage Onsen (50 min).



## Nagoya-meshi Culture

*Nagoya-meshi* is the name for the local Nagoyan food culture. It is popular for its uniqueness among Japanese food. A trip to Aichi wouldn't be complete without sampling *Nagoya-meshi*!

## Miso-based Cuisine

*Miso* (fermented soybean paste) is an essential ingredient used widely in Aichi cuisine. *Miso* is used Japan-wide, but Aichi is known for using dark-colored *miso* with a strong flavor. Nagoya people really love *miso*, and it is sometimes said that Nagoyans will eat anything if it has *miso* on it! There are a variety of delicious *miso*-based foods.

### Misokatsu

A breaded deep-fried pork cutlet served with a thick sweet and salty *miso* sauce. The most famous chain store is Yabaton. There are many stores scattered throughout Nagoya ([www.english.yabaton.com/](http://www.english.yabaton.com/)). Expect to pay ¥1000-¥2000.



misokatsu

### Misonikomi Udon

A stew of *miso* and thick *udon* noodles. Ingredients differ depending on the restaurant but may include cabbage, Japanese leek, egg, meat (chicken, beef or pork) and onion. Yamamotoya-honten is one of the most well-known places to eat misonikomi udon. There are numerous stores in Nagoya (<http://yamamotoyahonten.co.jp/>). Expect to pay ¥1000-¥2000.

## Hitsumabushi

Aichi is one of Japan's top eel production areas. Eel is slit open along the belly and grilled whole without steaming. It is flavored with sweetened soy sauce. *Hitsumabushi* allows you to enjoy eel in a number of ways:

1. Enjoy the grilled eel plain on rice as it is.
2. Sprinkle on some spices and condiments (green onion, wasabi horseradish, dried seaweed, Japanese herbs, etc.) to season the eel as you like.
3. Pour green tea or broth over the eel and rice and enjoy.

One of the longest-established *hitsumabushi* restaurants is Ichibiki (Ph. 052-582-3811), a 15 minute walk from Nagoya Station. Expect to pay ¥2000-¥4000.



grilled eel

## Tebasaki



*Tebasaki* are spicy deep-fried chicken wings, a perfect accompaniment to beer and sake. One serving of about 5 pieces usually costs around 500 yen. Enjoy *tebasaki* at any Sekai-no-yamachan restaurant ([www.yamachan.co.jp/](http://www.yamachan.co.jp/)). These restaurants can be found throughout Nagoya and are easily recognizable by the man sprouting wings outside each restaurant.

## Sake

How about some *sake* (rice wine) to go with that *Nagoya-meshi*? Aichi is famous for *sake* production and Aichi *sake* is known for its rich fragrance and mild and light taste, making it a perfect match for the strong flavors of *Nagoya-meshi*. If you are interested in learning more about *sake*, why not visit a *sake* brewery and experience making *sake* for yourself!

### Sekiya Brewery Company

[www.houraisen.co.jp/ja/ginjo/seminar01.html](http://www.houraisen.co.jp/ja/ginjo/seminar01.html)

Ph.0565-83-3601 E-mail:[ginjo@houraisen.co.jp](mailto:ginjo@houraisen.co.jp)

Enjoy making and drinking *sake* and take home the *sake* that you make. Call or email at least one week in advance to reserve a place.

**Cost:** ¥10,000 (¥6,000/half day)

## Matcha

*Matcha* is powdered green tea, different from the more common leaf-style green tea (*sencha*). *Matcha* is said to have many health benefits. It tastes a little bitter initially but has a mild and sweet aftertaste. Aichi is the largest producer of *matcha* in Japan. Nishio area in Aichi is especially famous for it. You can try *matcha* at Okazaki Park (see p.7).



## Café Culture



Aichi boasts the second largest number of coffee shops of any prefecture in Japan, and has a unique café culture known in Japanese as *mooningu*. It doesn't mean simply the time of day (as with English "morning"). Rather, this is the name for a Nagoya-style breakfast service available in most coffee shops. When you order a cup of coffee or a drink in the morning, you get toast, a boiled egg and a salad without any additional charge. Another specialty in Aichi cafés is sweet red bean paste on toast (*ogura* toast).

You can enjoy the quintessential Nagoya café experience at any Komeda Coffee store ([www.komeda.co.jp/index\\_en.php](http://www.komeda.co.jp/index_en.php)).



## World Cosplay Summit

[www.worldcosplaysummit.jp/en/](http://www.worldcosplaysummit.jp/en/) (English)

The annual World Cosplay Summit is held each year in Aichi. As Japanese Otaku culture spreads throughout the world, the popularity of this event has grown, with more people than ever participating in and enjoying watching the World Cosplay Summit.

Representatives from countries all over the world compete against each other on stage to determine the grand cosplay champion. It's the ultimate world cosplay championship. During the summit, you can see a parade by the representatives in Osu shopping district.

**When:** July and August (see HP)

**Cost:** free-¥3500 (depending on events)

**Transport:** Tsurumai line to Osu-cannon (Osu shopping district)



(c) WORLD COSPLAY SUMMIT 2015

Photo courtesy of World Cosplay Summit

## Nippon Domannaka Festival



Ph.052-241-4333

[www.domatsuri.com/english/](http://www.domatsuri.com/english/) (English)

Nagoya boasts perhaps the hottest festival in Japan; the *Nippon-Domannaka-Matsuri*, where about 23,000 people dance *yosakoi* through the streets in the height of summer. *Yosakoi* is a unique kind of Japanese-style dance. Performers dance wearing costumes called *happi* coats or *yukata*. One of the

most defining characteristics of the dance is the use of *naruko*, wooden clappers held in the hands of each dancer.

**When:** end of August (see HP)

**Cost:** Free (¥500-¥4000 if you want to reserve a seat)

**Place:** Hisaya-odori Park (main stage) and around

**Transport:** Meijo line to Yabacho station

# History

## Nagoya Castle

Ph. 052-231-1700 [www.nagoyajo.city.nagoya.jp/](http://www.nagoyajo.city.nagoya.jp/)

Nagoya Castle features many exhibits of historical Japanese objects, with English tours available. Be sure to notice the gold object on the top of the castle roof. Sometimes *samurai* groups enact energetic *samurai* performances including dances and short plays.



Check the website for detailed information.

**Open:** 9:00-16:30

**Closed:** 29 December - 1 January

**Cost:** ¥500/high school students and above, free/junior high school students and below

**Transport:** Higashiyama line to Sakae Station (5 min.), then Meijo line to Shiyakusho (3 min.). Nagoya Castle is a 5 minute walk from Exit 7.

## Inuyama Castle

Ph. 0568-61-1711 [inuyama-castle.jp](http://inuyama-castle.jp) (Japanese only)

Inuyama Castle was constructed in 1537 and designated a national treasure in 1935. This castle is one of the few original castles in Aichi that wasn't damaged in the war. The castle is lit up at night and a visit at this time for the view is recommended, but you will need to go earlier if you want to go inside.

**Open:** 9am-5pm

**Closed:** December 29-31

**Cost:** ¥550/adults, ¥110/children

**Transport:** Meitetsu line to Inuyama-guchi (30 min.) then walk (20 min.)



## Okazaki Castle

Ph: 0564-22-2122

<http://okazakipark.com/museum/e-ryujyou/kae171.htm> (English)

Okazaki Castle was originally constructed in the 15<sup>th</sup> century by the Saigo family. You can enjoy taking pictures from the 1<sup>st</sup> and 5<sup>th</sup> floors for free. If you visit Okazaki in summer, don't miss the summer festival! ([www.okazakimatsuri.jp/](http://www.okazakimatsuri.jp/))

**Open:** 9am-5pm (last entry 4:30pm)

**Close:** December 29-31

**Cost:** ¥200/adults, ¥100/kids (5 years old to elementary school)

**Transport:** Meitetsu line to Higashi-Okazaki (30 min.), then walk (15 min.)





## Tezutsu Fireworks Festival

Ph: 0532-53-7211 <http://www.toyohashi-cci.or.jp/event/honoo/english/index.html> (English)



Tezutsu Fireworks are impressive traditional fireworks that are hand-held. Pillars of fire reach up to 20m and rain down spectacularly. These fireworks are not for amateurs; fireworks demonstrators must practice many years and get a license. One famous Tezutsu fireworks festival known simply as “Fire Festival” is held in Toyohashi in September.

**When:** Early September (check HP)

**Cost:** ¥500-¥4000 depending on seats (cheaper if you purchase in advance)

**Transport:** Meitetsu line to Toyohashi (50 min.) then walk to Ekimae Station (6 min.) and take the Toyohashi-Shinai line to Toyohashi Kouenmae (14 min.)

## The Naked Festival

Ph: 0587-23-2121 [www.konomiya.or.jp/main/hadaka](http://www.konomiya.or.jp/main/hadaka) (Japanese only)

One of Japan’s most famous and eccentric festivals. A “God man” is elected from among participants by prayer. He is then chased by semi-naked men seeking to touch him to get rid of evil spirits and bring good fortune. Come between 3pm and 4pm when the excitement is at its peak!

**When:** February (check HP)

**Cost:** Free

**Transport:** Meitetsu line to Kokuhu-Miya (11 min.) then walk from the north exit (3 min.)



## Nagoya Festival

Ph: 052-972-7611 [http://www.nagoya-festival.jp/?page\\_id=932](http://www.nagoya-festival.jp/?page_id=932) (English)

Nagoya Festival has an impressive parade through Sakae featuring the three feudal lords (Oda Nobunaga, Toyotomi Hideyoshi and Tokugawa Ieyasu). Other events include street performances by local entertainers and performances by *samurai* and *ninja*. For two days, the whole city is taken over by this festival!

**When:** October (Check HP for details)

**Cost:** Free

**Transport:** Osu Shopping Street Higashiyama line to Osu (3 min.); Hisaya-Odori Park Higashiyama line to Sakae (5 min.) then walk (8 min.)

## Atsuta Shrine

Ph. 052-671-4151 <http://www.atsutajingu.or.jp/en/intro/> (English)

Atsuta shrine is the most famous shrine in Aichi. Pray, visit the smaller shrines, or drink *matcha* green tea (see p.13). Walk around and enjoy the traditional Japanese shrine buildings and scenery. If you are lucky, you may see a Japanese style wedding ceremony.

Atsuta Shrine is a popular place for *hatsumode*. This is the practice of going to a shrine early in the new year to pray for a good year.

**Open:** 24h

**Cost:** Free

**Transport:** Meitetsu line to Jingumae (6 min.) then walk from the west exit (3 min.)



## Meiji Village



Ph. 0568-67-0314

<http://www.meijimura.com/english/> (English)

Take a trip back in time to the Meiji era. Try on Meiji era clothes, ride on a reconstruction of the first train in Japan, play simple traditional games, try Meiji era foods or just stroll around and enjoy the historical buildings.

**Open:** 9:30-17:00 March - July, September & October; 10:00-17:00 August; 9:30-16:00 November; 10:00-16:00 December - February

**Closed:** December 31st & every Monday of December, January and February

**Cost:** ¥1700/18 years old and above, ¥1300/university students and pensioners, ¥1000/high school students, ¥600/elementary and junior high school students

**Transport:** Meitetsu line to Inuyama (30 min.) then take the Meiji Village bus (20 min.)

## Chita Tour

## Mikawa Tour

## Nagoya Station

Take the Meitetsu line to Kowa and take the free bus to the port. Then take the ferry to Himakajima.

70min

## Himakajima

Enjoy the scenery, rent bicycles and have seafood for lunch. (p.4)



Take the ferry from Himakajima to Kowa Port. Take the free bus to Kowa station and then the free loop bus\* or a taxi.

25min

## Ebisenbei no Sato

Join a factory tour and enjoy making Japanese crackers. (p.6)



Take the free loop bus\* or a taxi to Kowa Station and take the free bus\*\*, Chita bus, or Umikko bus to Uotaro-mae.

20min

## Dinner: Uotaro

Enjoy a fresh seafood BBQ ¥3,000~



Take the bus to Kowa Station and change to the Meitetsu train for Nagoya.

10min

## Nagoya Station

36min

Take the Meitetsu train to Higashi-Okazaki.

## Okazaki Castle

Take scenic pictures from the castle. (p. 11)



Take the train from Higashi-Okazaki Station to Shin-Anjo and change the train to Nishio. Take the bus to Isshiki Port and the ferry from there to Sakushima Port.

1h40min

## Sakushima

Enjoy the artistic exhibits and natural scenery.

Fresh seafood for lunch. (p.4)



Take the ferry from Sakushima Port to Isshiki Port, then take the bus to Nishio Station. From there take a train to Shin-Anjo and change for the train to Nagoya.

2h05min

\* Only available on Sundays or National holidays.

\*\* Only available on Holidays



## Inuyama Tour

### Nagoya Station

Take the Meitetsu rapid /limited train to Inuyama.

30/40 min

**Inuyama Castle**  
Visit the oldest castle tower in Japan, built in 1537. (p.11)



Take the bus from Inuyama Station to Meiji-Mura.

20min

**Meiji-Mura**  
Enjoy popular Meiji foods and take a stroll through a Meiji period village. (p.13)



Take the non-stop bus from Meiji-Mura to the Sakae bus center and walk 15 minutes.

1h

**Dinner: Maruha-Shokudou**  
Enjoy a big deep-fried crumbed shrimp and seafood set. ¥1,000~2,000



Take the Higashiyama Line from Sakae Station.

5min

### Nagoya Station

## Seto-Toyota Tour

### Nagoya Station

5min

Take the Meitetsu Line to Sako and walk 3 minutes.

**Toyota Industrial Museum**  
Learn about Toyota's history and enjoy technological demonstrations. (p.2)



Take the Meitetsu Line to Nagoya and change to the Higashiyama Line. Change at Fujigaoka Station to the Linimo Line. Get off at Tojishiryokan Minami and walk 15 minutes.

60min

**Aichi Prefectural Ceramic Museum**  
Learn about Japan's ceramics history and try making or painting ceramics. (p.3)



35min

Take the Linimo Line to Yakusa and change to the Aichikanjo Line. Get off at Homi Station and take the loop bus to Sanage Hot Springs.

**Sanage-Onsen**  
Enjoy a dip in a relaxing hot spring, and try sweet fish for dinner. (p.7)



60min

Take the loop bus to Fujigaoka Station and change to the Higashiyama Line.

# Nagoya Tour

[map](#) →

Nagoya Station



**Morning café:**  
Komeda Coffee  
in Esca shopping  
mall. Enjoy Nagoya's  
*mooningu* service. (p.9)



**Night view:**  
Midland Square  
See beautiful  
Nagoya's night view  
from the 44F. (p.5)



Take the Higashiyama Line  
to Sakae, change to the  
Meijo Line and get off at  
Shiyakusho. 15min



**Nagoya Castle**  
Enjoy the  
historical castle  
atmosphere.  
(p.11)



10min Walk



**Dinner: Ichibiki**  
Enjoy teriyaki-  
flavored eel.  
(p.8)



Take the Meijo  
Line to Yabacho. 15min



**Lunch: Yabaton**  
Enjoy a deep-  
fried pork cutlet  
with miso sauce.  
(p.8)



20min Walk

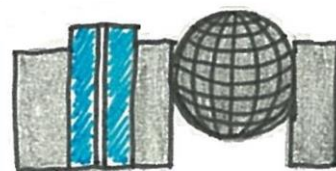


Walk 15 min.

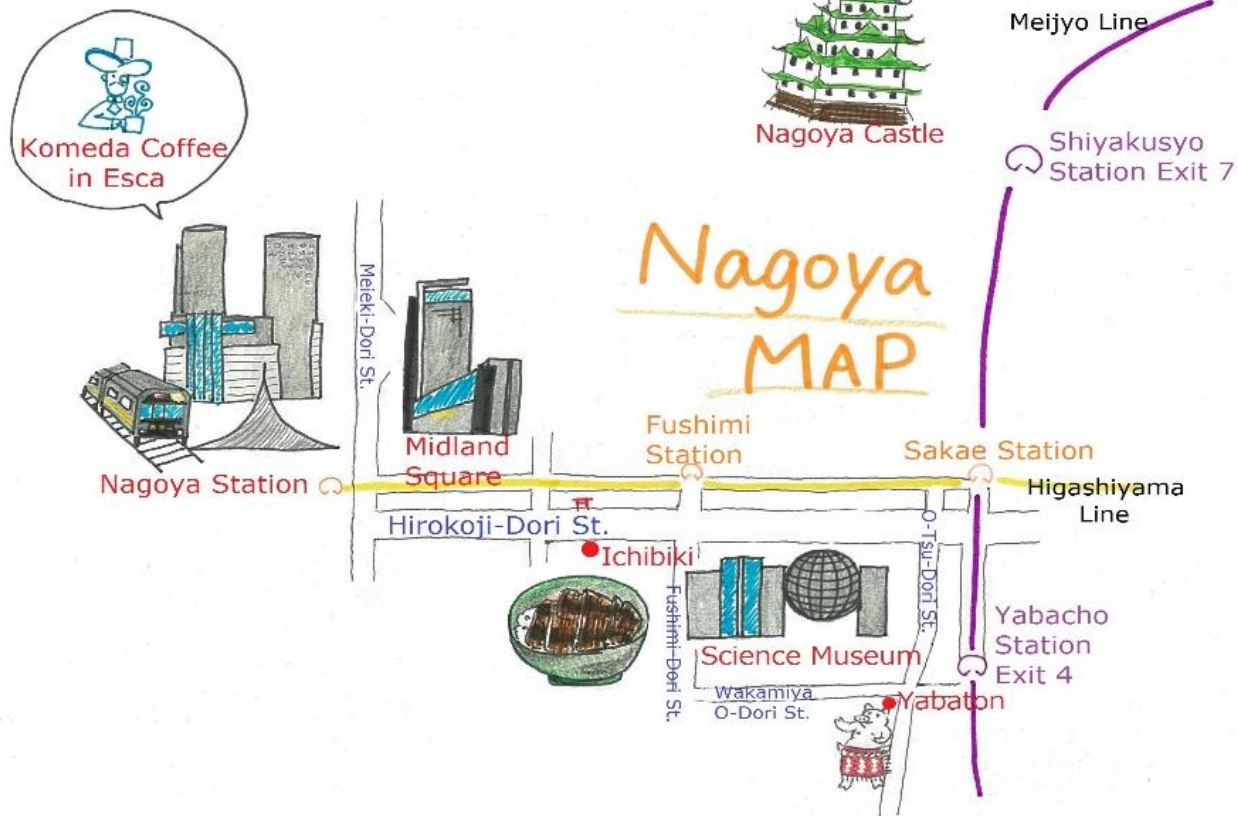


**Nagoya  
Science  
Museum**

See the biggest planetarium  
in the world. (p.2)



# Nagoya Tour Map



# Osu Food Tour Map

